

TraceGOLD GC Metal Columns

Ordering Information

TraceGOLD GC Metal Column	Phase Dimensions	Part Number
TG-1MT	15m x 0.25mm x 0.25µm	26M99-1300
TG-1MT	30m x 0.25mm x 0.25µm	26M99-1420
TG-1MT	30m x 0.25mm x 0.50µm	26M99-2230
TG-1MT	30m x 0.25mm x 1.00µm	26M99-2960
TG-1MT	60m x 0.25mm x 0.25µm	26M99-1540
TG-1MT	15m x 0.53mm x 0.50µm	26M99-2130
TG-1MT	6m x 0.53mm x 0.15µm	26M99-4100
TG-1MT	15m x 0.53mm x 1.00µm	26M99-2860
TG-1MT	30m x 0.53mm x 0.25µm	26M99-1440
TG-1MT	30m x 0.53mm x 0.50µm	26M99-2250
TG-1MT	30m x 0.53mm x 1.00µm	26M99-2980
TG-1MT	30m x 0.53mm x 1.50µm	26M99-3360
TG-1MT	30m x 0.53mm x 3.00µm	26M99-3960
TG-5MT	15m x 0.25mm x 0.10µm	26M98-0350
TG-5MT	15m x 0.25mm x 0.25µm	26M98-1300
TG-5MT	30m x 0.25mm x 0.25µm	26M98-1420
TG-5MT	30m x 0.25mm x 0.50µm	26M98-2230
TG-5MT	30m x 0.25mm x 1.00µm	26M98-2960

TraceGOLD GC Metal Column	Phase Dimensions	Part Number
TG-5MT	60m x 0.25mm x 0.25µm	26M98-1540
TG-5MT	15m x 0.53mm x 1.00µm	26M98-2860
TG-5MT	30m x 0.53mm x 0.25µm	26M98-1440
TG-5MT	30m x 0.53mm x 0.50µm	26M98-2250
TG-5MT	30m x 0.53mm x 1.00µm	26M98-2980
TG-5MT	30m x 0.53mm x 1.50µm	26M98-3360
TG-5MT	30m x 0.53mm x 3.00µm	26M98-3960
TG-WAXMT	15m x 0.25mm x 0.10µm	26M88-0350
TG-WAXMT	15m x 0.25mm x 0.25µm	26M88-1300
TG-WAXMT	30m x 0.25mm x 0.25µm	26M88-1420
TG-WAXMT	30m x 0.25mm x 0.50µm	26M88-2230
TG-WAXMT	60m x 0.25mm x 0.25µm	26M88-1540
TG-WAXMT	15m x 0.53mm x 0.50µm	26M88-2130
TG-WAXMT	15m x 0.53mm x 1.00µm	26M88-2860
TG-WAXMT	30m x 0.53mm x 0.25µm	26M88-1440
TG-WAXMT	30m x 0.53mm x 0.50µm	26M88-2250
TG-WAXMT	30m x 0.53mm x 1.00µm	26M88-2880
TG-WAXMT	30m x 0.53mm x 1.50µm	26M88-3360

Thermo Scientific
TraceGOLD GC Metal Columns

Discover these great resources:

Chromatography Resource Center
Search our database of over 4000 applications

www.thermoscientific.com/chromatography



Chromatography Videos
Learn more about chromatography

What are these codes? Visit www.thermoscientific.com/codes

Push the limits of your analysis Elevate your performance

Your analysis is critical, so the tools you choose are critical. Thermo Scientific TraceGOLD GC Metal Columns are proven to withstand the stress of elevated temperatures and highly active compounds – without breakdown; without bleed. So go ahead. Push the limits of your analysis with confidence.

For more information, visit www.thermoscientific.com/chromatography or talk with your account representative.

© 2011 Thermo Fisher Scientific Inc. All rights reserved. All trademarks are the property of Thermo Fisher Scientific Inc. and its subsidiaries. Specifications, terms and pricing are subject to change. Not all products are available in all countries. Please consult your local sales representative for details.

PSCCSTGMETAL 0711

USA and Canada +1 800 332 3331
France +33 (0)1 60 92 48 34
Germany +49 (0) 2423 9431 -20 or -21
Switzerland +41 56 618 41 11
United Kingdom +44 1928 534110
Japan +81 3 5826 1615

China +86-21-68654588 or +86-10-84193588
1 800-810-5118
India 1 800 22 8374 (toll-free) or +91 22 6716 2200
Australia 1300 735 292 (free call domestic)
New Zealand 0800 933 966 (free call domestic)
All Other Enquiries +44 (0) 1928 534 050

Technical Support
North America +1 800 332 3331
Outside North America +44 (0) 1928 534 440

Thermo
SCIENTIFIC
Part of Thermo Fisher Scientific

Thermo
SCIENTIFIC

Higher performing columns

High throughput while maintaining excellent data quality with robust systems is a challenge for today's analysts. Leveraging over 30 years of chromatography expertise, we continue to set the standard for chromatography consumables. TraceGOLD™ GC Metal Columns are designed with your unique needs in mind.

Turn up the heat

Elevating the standard for temperature range

Take these columns to higher temperatures with no risk of column breakdown, no risk of column bleed. Use the TG-1MT and TG-5MT over a range of -60°C to 430°C and the TG-WAXMT over a range of +40°C to 260°C. With no risk of column breakdown, achieve more accurate analysis in less time.

Push the limits

Delivering superior inertness

Highly active compounds demand superior stability. These columns deliver superior inertness – so you can push the limits of your analysis.

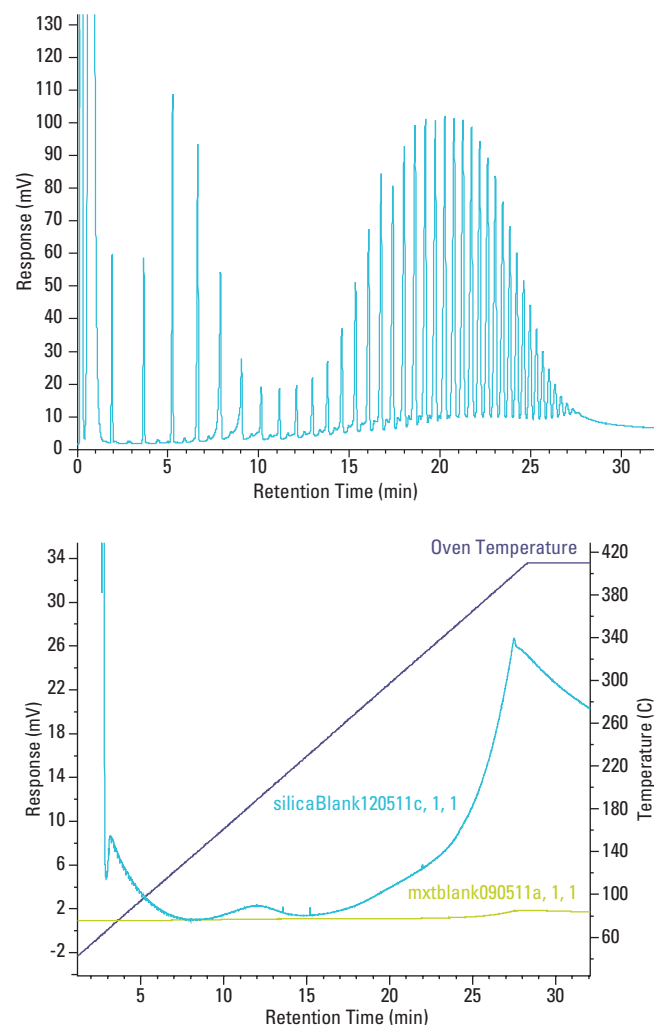


Figure 1: Top: A simulated distillation chromatogram shows carbon range C12-C90 using a TG-1MT metal GC column. Bottom: This chromatogram shows the relative amounts of column bleed using a TG-1MT GC column against a TG-1MS GC column when running a blank. As can be seen, the TG-1MT shows significantly lower bleed levels once the temperature rises above 300°C.

Gain peace of mind

Delivering greater robustness

These high-quality columns withstand the added pressure of your requirements. They will not falter under your analysis conditions.

Quality performance

TraceGOLD GC Metal Columns are designed to be stressed, yet deliver low bleed, no breakdown, and long lifetimes (Figure 2). That's a Quality Performance.

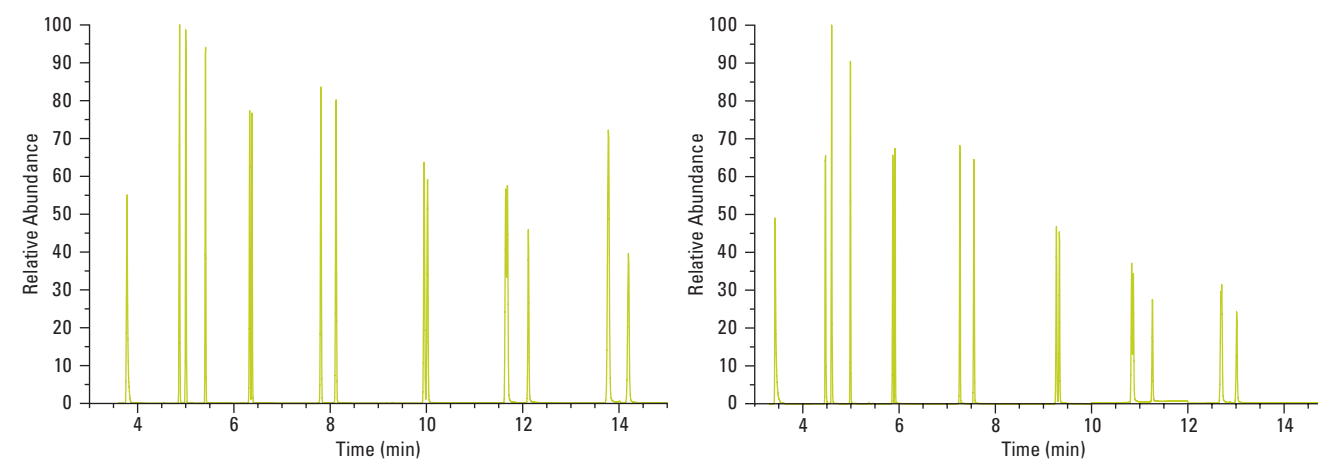


Figure 2: Left: Sample TIC chromatogram of 16 PAHs analyzed on a TG-5MT metal GC column. Right: Sample TIC chromatogram of 16 PAHs analyzed on a TG-5MS GC column. Only 15 peaks shown as Indeno(1,2,3-cd)pyrene and Dibenzo(a,h)anthracene coelute (seperatable using MS). These chromatograms illustrate that the chromatography is not adversely affected by using a metal column over a silica column.

TraceGOLD GC Metal Columns are ideally suited for applications in the petrochemical, environmental, forensics, and food safety industries.

Uses	TG-1MT Column	TG-5MT Column	TG-WAXMT Column
Solvent Impurities	•	•	•
PCB Components	•	•	
Essential Oils	•	•	•
Hydrocarbons	•	•	
Semi-volatiles	•	•	
Pesticides	•	•	
Drugs of Abuse	•	•	
Refinery Gases	•		
FAMES			•